

In this tutorial, I will demonstrate how to create custom brushes using **Adobe Photoshop**. You can use the steps provided to create your own custom brushes and use them whenever you like in any of your design. I like creating my own custom brushes because it makes me feel proud when using my own creation and I don't even need to worry about copyright issues associated with using other people's brushes.

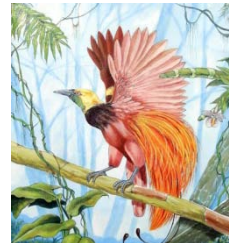
Creating brushes is a lot easier than you might think. There are many free brushes one could find nowadays online however, some of them might not be customized to suit your liking, especially if you are a culturally oriented type of designer. You might want to use certain textures from cultural motifs as brushes to paint on your posters, cards or any design. Use this tutorial to learn the steps and integrate the idea on any texture you wish to use for your custom brush.

You need to have Adobe Photoshop in your computer to follow along with this tutorial. Go to www.adobe.com to get a trial version if you don't have any.

1 PREPARING TEXTURE

Firstly, you have to identify a texture to use as your brush. You can use any texture to start off with. There are various ways to prepare your texture before creating your brushes. Here, I will show one of these many ways.

Ok, here's the image I'm going to use (*image on the right*). It is one of my earlier paintings made few years back. I am going to use the bird of paradise "Kumul" to create my brush. You can choose any image or texture you would like to use.



Bring the image into Adobe Photoshop; edit the image to get rid of the background. The idea is to get only the subject you want and in the case here, it's the bird (*image at below left*). Once the background is removed, go to Image>Adjustment>Hue/ Saturation (*shortcut-Ctrl + U*). This will call up the Hue/ Saturation dialogue. Set the **lightness** to **-100** to give a black silhouette of the image (*image at bottom right*).



2

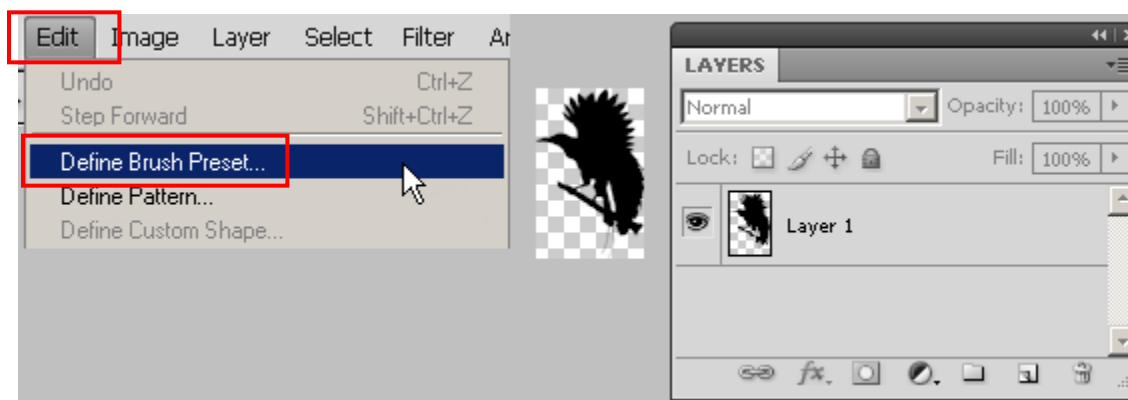
CREATING THE BRUSH

Your texture should be converted to a mono color, preferably black using any adjustment effect such as *hue/ saturation* or *levels*. Here, I've converted the Kumul to black as shown on the right.

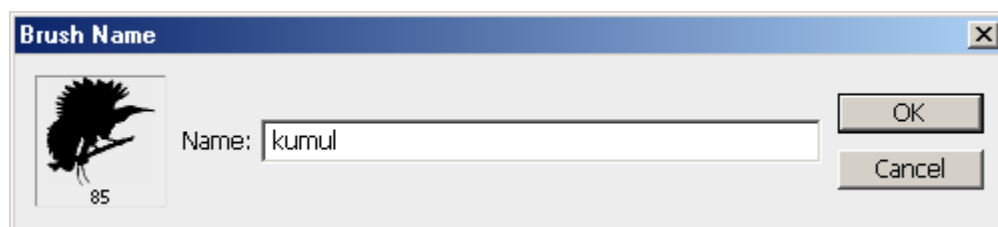


Once you've got the texture or image converted, you're ready to create your brush.

With your converted texture or image still open in Photoshop, go to the **Edit Menu** and down to **Define Brush Preset** (*below image*)



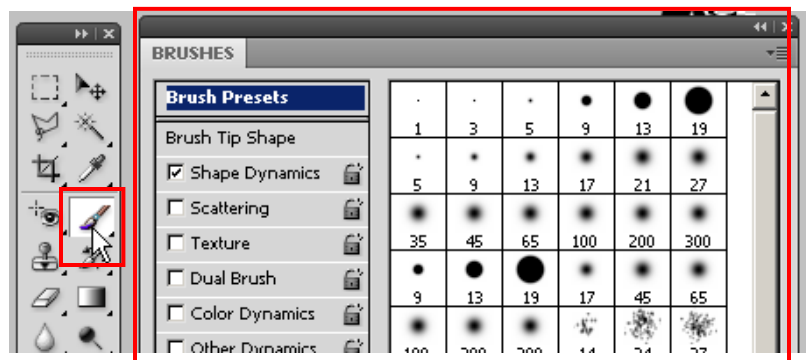
You will get a pop-up dialogue like the one shown below. This is where you give a name to your brush. Your new brush will be assigned with a number which you can use to identify it in the brush palette later. Click Ok to return to the Photoshop window. That's it, your new brush has been created.



3

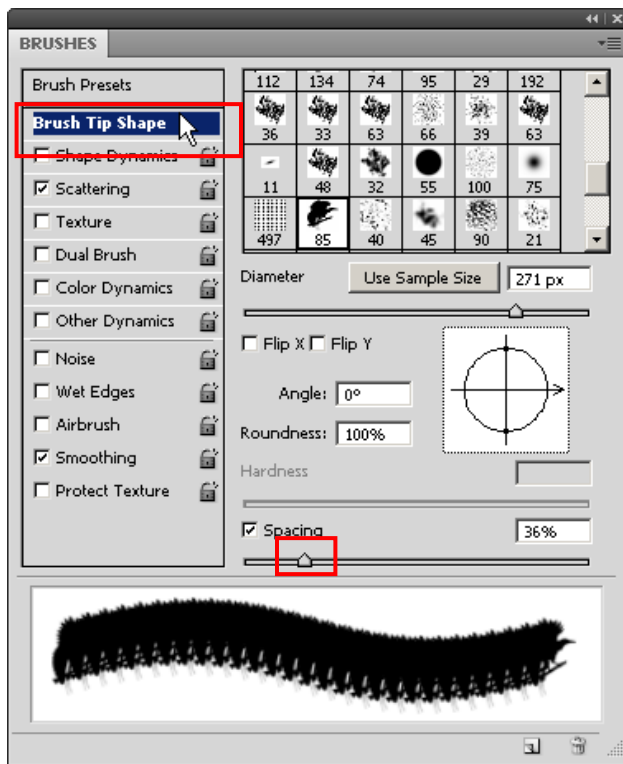
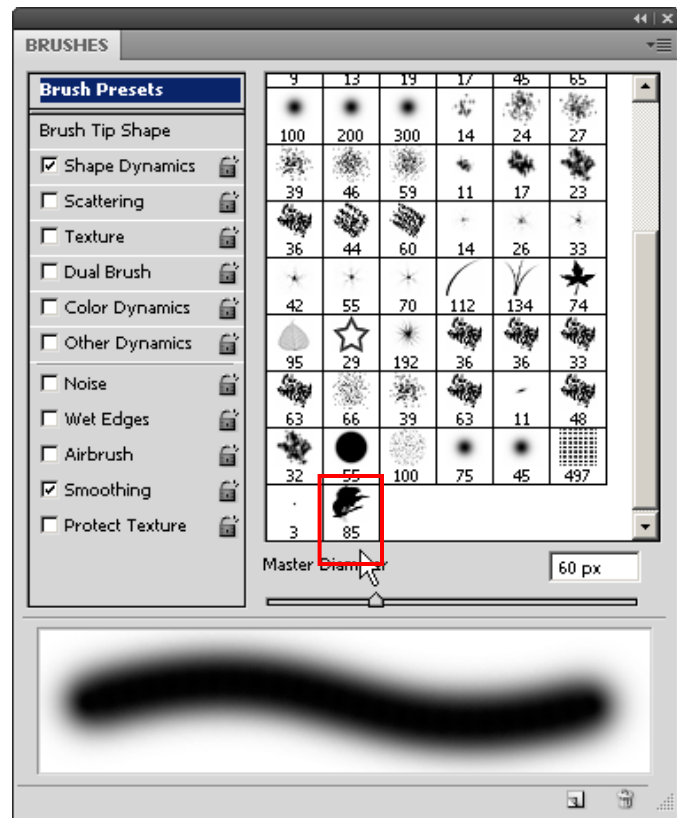
ACCESS THE BRUSH

To get the brush, you can use the brush palette. First you have to select the brush tool, and then **press F5** to call up the Brushes palette.



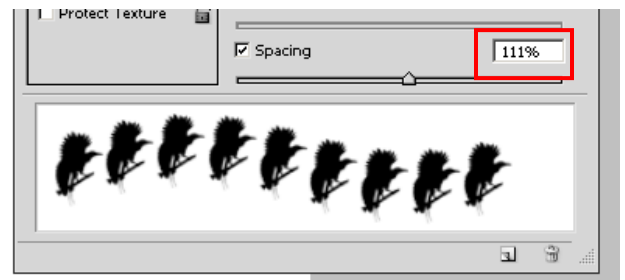
Within the brushes palette, scroll down to the bottom of the list to locate your brush. You can identify your brush with the number assigned, or even use the thumbnail to confirm.

Once you locate it, click the icon that represents it to select it. There are other options for you to do further adjustments to the brush and those are located within the Brushes palette. Spend some time to see how each of them works. There is no harm exploring the brushes settings.



For the case here, the brush (*spacing*) is too close so I will adjust the spacing of the brush. You can do the same with your brush.

To access the spacing controls, first select the **“Brush Tip Shape”** (outlined red, top-left) and under the spacing options (outlined red, bottom-left), adjust the slider. My default spacing is 36%, as shown on the left so I have increased it to 111% as shown below.



So there you go, test it somewhere to grab a feel of it before you use it in your design.

4

USING THE BRUSH

You have already selected your brush, so now create a new document and start using the brush.



Well, this tutorial is very short and I hope it had given you fare knowledge of creating your own custom brushes to be used in Photoshop.

Feel free to post me comments if you have any, else visit [.artech.com.pg](http://artech.com.pg) for more tutorials.

MORE TUTES:



NOTE: There are various tutorials produced in CDs/ DVDs for those who wish to learn at their own pace at home anytime. Those video tutorials can only be downloaded based on request. If you want a copy, visit <http://www.artech.com.pg/> under contacts; get the address and send us your request using the email & phone.

Copyright © 2013, ArTech

OTHER TUTORIALS: + Digital Media Design + Web Design + Office Applications + 3D Graphics
+ Interactive Media Design + Digital Video + Digital Audio + 2D Animation